

VOLUNTEERS FOR THE WEEK OF NOVEMBER 13, 2011

Nursery volunteers are asked to be in the nursery 15 minutes before the service begins.

NURSERY VOLUNTEERS on Sunday

8:30 a.m. - Jamie Burris, Louise Holderman, Crystal Johnson, Darrell & Debra Mauldin & Dawn Russell

11:00 a.m. - Kellyn Brooks, Jeannie Culp, Doug & Misti Eudy, Tim Thurston

6:00 p.m. - Judy Broyles, Lynn Burr, Linda Daniels, Jamie & Jeanna Poplin, & Sandra Tucker

NURSERY VOLUNTEERS for Wednesday, November 16 - Paige Burris, Carol Gibson, Greg Loffin, Judy Lowder, Shirley Smith, Gary & Amanda Whitley

CHILDREN'S CHURCH VOLUNTEERS

8:30 a.m. - Janice Bost, LeAnne Sides, Terry & Chanda Waller & Paige Wiggins

11:00 a.m. - Hannah Benfield & Heather Yuckel

PRAYER ROOM MINISTRY: Sue Mullins & Marie Lowder

GREETERS 8:30 a.m.; 11:00 a.m. & 6:00 p.m. services: Shirley Smith, Rhonda Smith, Lenwood, Smith, Linda Daniels, Jeremy P. & Heather Almond, Joe Smith, Evelyn Mauldin, Dawn Russell, Billy & Samantha Parker

A.M. SECURITY: Joseph Hawkins

AWANA MEDICAL PERSONNEL: Andy Eifird

8:30 a.m.

USHERS

11:00 a.m. & 6:00 p.m.

Robert Burr

Kip Cook

Eric Curlee

"It is more blessed

David Harrington

Greg Eudy

to give than to receive."

Ronnie Hardister

Trent Hatley

Acts 20:35

Brad Honeycutt

Kevin Johnson

Billy Parker

Ashton Laine

Devin Parker

Norton Pease

James Russell

Joe Smith

David Smith

Terry L. Smith

Bill Starcher

Joel Thompson

Joel Thompson

"With each new experience of letting God be in control, we gain courage and reinforcement for daring to do it again and again." Gloria Gaither

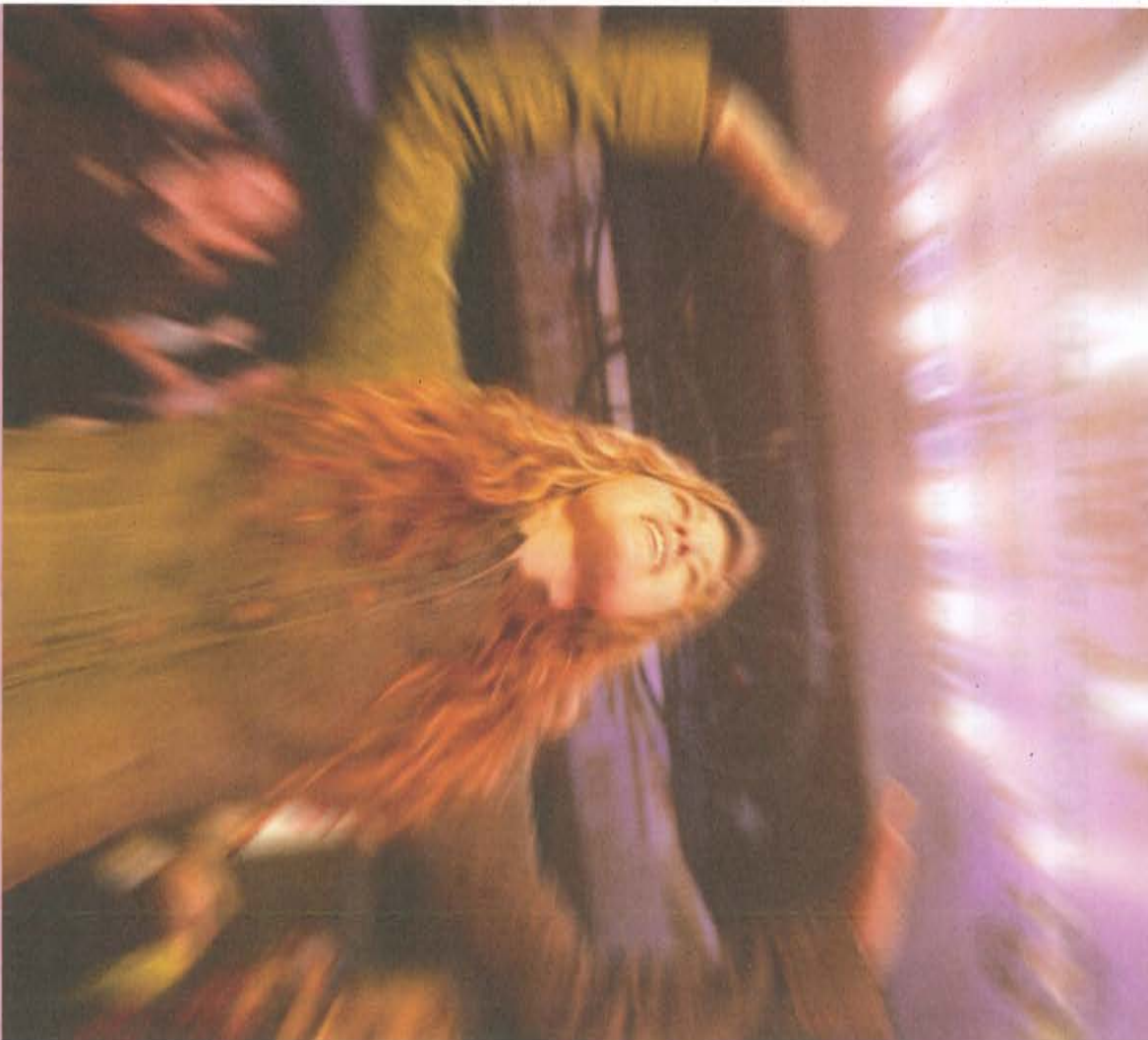
3700.020512 9781431000030

Photos by Corbis

© Copyright 2011 LifeWay Press®, Printed in the United States of America
 Scripture quotation taken from the Holman Christian Standard Bible®.
 Copyright © 1999, 2000, 2002, 2003, 2009 by Holman Bible Publishers.
 Used by permission.

LifeWay Worship

lifeway.com/worship



I will praise You
 with all my heart,
 Lord my God.

Psalm 86:12

PROSPECT BAPTIST CHURCH

Stoney M. Benfield, Pastor

*Robert H. Eller, Associate Pastor of Youth & Education
Darrell D. Humeycutt, Pastoral Care / Outreach Minister*

Phillip A. (Tony) Thomas, Minister of Children

Monica J. Otten, Music Director Steven D. Baucom, Choir Director

Suzanne Mc Lester, Pianist November 13 2011 Amy Cord, Organist

Worship: 8:30 a.m. Sunday School: 9:45 a.m. Worship: 11:00 a.m.

Thank for you for honoring us with your presence as we celebrate our citizenship in the kingdom of Christ Jesus.

ENTER TO WORSHIP

Call to Worship by the Sanctuary Choir	Your First Day in Heaven
Greeting and Prayer	Pastor Benfield
Welcome	God Is So Good
Hymn	Worthy of Worship
Offertory Prayer	
Offering	
Sanctuary Choir Special	Forever
Songs of Praise	Open the Eyes of My Heart
	How Great Thou Art
Scripture	Pastor Benfield
Message	Pastor Benfield
Response	Have Thine On Way Lord
Announcements	Pastor Benfield
Benediction	

LEAVE TO SERVE

As we leave this house of worship, we rejoice that Christ is King
for all time and eternity. Alleluia!

EVENING WORSHIP SERVICE

6:00 p.m.

Love is the key that can open another's heart. Our goal is to love one another as Christ has loved us. Therefore, be assured that you're lovingly welcomed to God's house. Let us rejoice together now!

Call to Worship by the Sanctuary Choir	Your First Day in Heaven
Greeting and Prayer	Pastor Benfield
Welcome	Soon and Very Soon
Hymn	We're Marching to Zion
Offertory Prayer	
Offering	
Sanctuary Choir Special	New Life Medley
Song of Praise	Better Than Life
Special Music by the Youth Praise Band	From the Inside Out
Scripture	Pastor Benfield
Message	Pastor Benfield
Response	Just As I Am
Benediction	

*As you leave this place tonight, grace and peace to you from
God our Father and the Lord Jesus Christ*



BECOME PART OF OUR CHURCH FAMILY - For persons who have been saved by accepting Jesus Christ as Lord and Savior and desire to obey Christ by being scripturally baptized by immersion.

LETTER FROM ANOTHER BAPTIST CHURCH - For persons who are saved, have been baptized by immersion after salvation and are members in good standing of another Baptist church which will transfer them by letter to PBC (PBC will handle the transfer).

STATEMENT OF FAITH - For persons who are saved and have been baptized by immersion after salvation but are not members of another Baptist church.



Christmas Cards

The Morning WMU will once again sponsor the Post Office for mailing your Christmas cards to church family members. Proceeds from this project will benefit the Lottie Moon Christmas Offering.

- ◆ Cost of "mailing" a card is 25¢ (drop your money in the appropriate slot)
- ◆ Mailbox will be located on the FLC kitchen counter along with the drop box for your money
- ◆ Cards will be delivered during SS to the SS class indicated on the person's envelope. Please make a special effort to put the SS class room number/name on the card you are "mailing."
- ◆ Cards can begin being "mailed" on November 27 and will be delivered on November 27, December 4, December 11 and December 18 (last delivery date)
- ◆ Proceeds from this project will go toward the Lottie Moon Christmas Offering

CLOTHING THE COMMUNITY

PROSPECT BAPTIST CHURCH

Saturday, December 3, 2011

8:00 a.m. - noon

in the

Children and Education Building

This is an opportunity to serve our community and offer the message of salvation. We are asking for clothing donations (**CLEAN & GENTLY USED**) of winter coats, mittens, scarves, gloves, shoes, sweaters, blankets and other seasonal clothing for adults, youth, children and babies. We are also in need of bundles of diapers. Volunteers will need to sign up on the sheets in the FLC foyer and indicate how they plan to participate. Please consult the sign up sheet before committing and see if you will be interested in this project. Instructions and contact number for Susan Strawn and Chrissy Holton are on the sign up sheets. **On Wednesday, November 30 immediately following the p.m. worship there will be a meeting of all who plan to participate in FLC Rooms 101 & 102.** By signing up, you will help us know how to plan. This is our first venture at this so please bear with us. Instructions are on the sign up sheet regarding the pick up of donations. All clothing etc left at the end of the clothing drive will need to be removed. Do not leave clothing for the drive at the church. Susan & Chrissy (**DO NOT BRING DIRTY OR TORN CLOTHING**) - Flyers are available.



MARK YOUR CALENDARI

CHURCH WIDE CAROLING

Friday, December 9, 2011

Raindate: Saturday, December 10, 2011

beginning at 6:30 p.m.

- Sign up sheet in the FLC foyer for carolers. Please indicate the number of children who will accompany you (**8th grade children and younger must be accompanied by a chaperone**).
- Sign up sheet in the FLC for snack preparers and servers (only). If you can provide cookies/popcorn, please indicate same on this sign up sheet.
- People who would like to just donate cookies / popcorn /2 liter drinks, there is a sign up sheet just for you (a few bags of coffee is needed also - see sign up space for coffee
- On Sunday, December 4, immediately following the p.m. worship service **ALL** who have signed up to participate (carolers & snack preparers and servers) are asked to meet in the FLC for more information. Childcare **WILL NOT** be provide for caroling. Please make sure that you are signed up to participate as I will be organizing groups for caroling "out in the snow!"
- **PLEASE** note the sheet that you are signing up on so you will not sign up for something you don't intend to participate.
- Sign up sheets will be posted on November 13 with the deadline to sign up December 4
Musically, Monica

If you would like to purchase a **CHILDREN'S ONE YEAR BIBLE** (ages 6 - 10), please come by the church office (\$13.50 each). **JOHNNY HUNT'S DEVOTIONAL BOOKS I & II** are also available at \$15.00 each. These make great Christmas gifts.

NO MORE LEFTOVER TURKEY! NEW LONDON UNITED METHODIST CHURCH MEN invite you to a **SPAGHETTI SUPPER** on Saturday, November 26, 2011 in the Fellowship Hall from 2:00 until 7:00 p.m. Tickets are \$5.00 each for spaghetti, salad, garlic bread and dessert. NLUMC is located beside the New London Post Office. Proceeds will be used for local missions. If you would like an advance ticket contact Joyce in the church office (704/982-6167) **CROSSROADS SUNDAY SCHOOL CLASS** party from noon until 3:00 p.m. on Sunday, December 4, 2011 in the fellowship hall.